

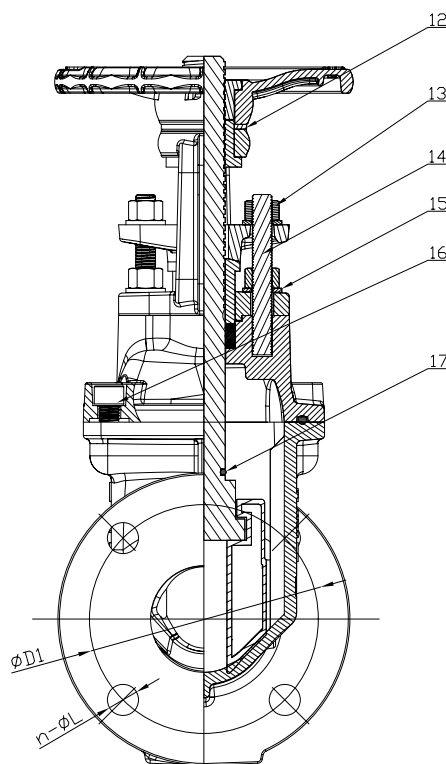
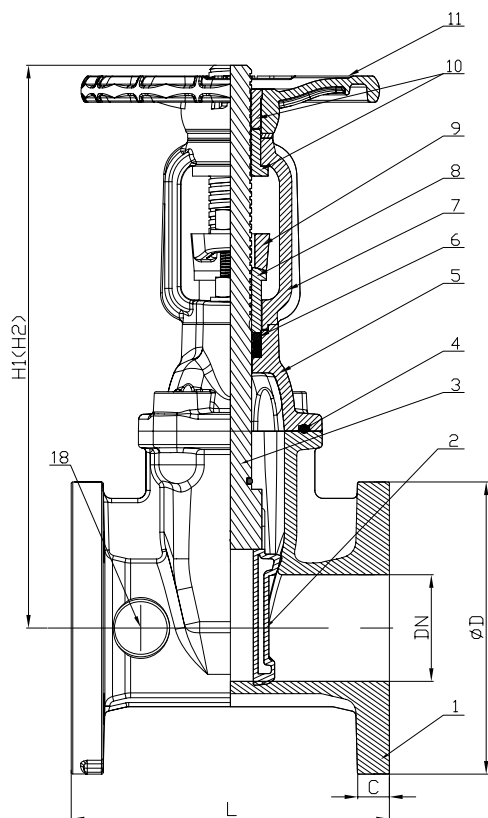


OUTSIDE SCREW & YOKE GATE VALVES

Resilient Wedge OS&Y Gate Valve / Model OSY-300FF



- Size** : 2", 2 1/2", 3", 4", 5", 6", 8", 10", 12"
- Working Pressure** : 20,7 bar (300psi)
- Max. Test Pressure** : 41,4 bar (600psi)
- Working Temperature** : 0 - 80°C
- Connection** : Flange diameter and thickness according to ANSI B16.1 Class 125, EN1092-2 PN10 or EN1092-2 PN16
- Specifications** : Design and dimensions conform to AWWA C515
- Corrosion Protection** : Fusion bonded epoxy coating in accordance with ANSI/AWWA C550 for both interior and exterior surface.
- Features** : Pre-notched, stainless steel stem for easy attachment of supervisory switch





OUTSIDE SCREW & YOKE GATE VALVES

Material List

| No | Part | Material | ASTM Specification |
|----|---------------|-----------------|----------------------------|
| 1 | Valve Body | Ductile Iron | ASTM A536, 65-45-12 |
| 2 | Wedge Disc | Ductile Iron | ASTM A536, 65-45-12 & EPDM |
| 3 | Stem | Stainless Steel | AISI 420 |
| 4 | Bonnet Gasket | EPDM | Commercial |
| 5 | Bonnet | Ductile Iron | ASTM A536, 65-45-12 |
| 6 | Stem Packing | EPDM | Commercial |
| 7 | Yoke | Ductile Iron | ASTM A536, 65-45-12 |
| 8 | Stem Bushing | Brass | HPb59-1 |
| 9 | Gland | Ductile Iron | ASTM A536, 65-45-12 |
| 10 | Stem Nut | Brass | HPb59-1 |
| 11 | Handwheel | Ductile Iron | ASTM A536, 65-45-12 |
| 12 | Washer | Brass | HPb59-1 |
| 13 | Gland Nut | Carbon Steel | Zinch Plated |
| 14 | Stud | Carbon Steel | Zinch Plated |
| 15 | Flat Washer | Carbon Steel | Zinch Plated |
| 16 | Nut | Carbon Steel | Zinch Plated |
| 17 | O-Ring | EPDM | Commercial |
| 18 | Plug | Bronze | ASTM B583 C89833 |

Dimensions - Weights

| SIZE | | DIMENSIONS (mm) | | | | | L | |
|-------|--------|-----------------|------|------|-----|------|---------|------|
| | | A | B | C | N-M | ØD1 | PN10/16 | ANSI |
| DN50 | 2" | 178 | 348 | 400 | 152 | 16 | 150 | 178 |
| DN65 | 2 1/2" | 190 | 373 | 440 | 175 | 17,5 | 170 | 190 |
| DN80 | 3" | 203 | 408 | 490 | 191 | 19,1 | 180 | 203 |
| DN100 | 4" | 229 | 471 | 573 | 229 | 19,1 | 190 | 229 |
| DN125 | 5" | 254 | 541 | 665 | 254 | 19,1 | 200 | 254 |
| DN150 | 6" | 267 | 601 | 755 | 279 | 19,1 | 210 | 267 |
| DN200 | 8" | 292 | 774 | 975 | 343 | 22,2 | 230 | 292 |
| DN250 | 10" | 330 | 939 | 1193 | 406 | 23,8 | 250 | 330 |
| DN300 | 12" | 356 | 1065 | 1370 | 483 | 25,4 | 270 | 356 |

| SIZE | | DIMENSIONS (mm) | | | | | | WEIGHTS (kg) |
|-------|--------|-----------------|------|------|----------|---------|--------|--------------|
| | | D1 | | | n-ØL | | | |
| | | ANSI | PN16 | PN10 | ANSI | PN16 | PN10 | |
| DN50 | 2" | 120,7 | 125 | | 4-Ø19,1 | | | 14,7 |
| DN65 | 2 1/2" | 139,7 | 145 | | 4-Ø19,1 | | | 17,7 |
| DN80 | 3" | 152,4 | 160 | | 4-Ø19,1 | 8-Ø19,1 | | 23,1 |
| DN100 | 4" | 190,5 | 180 | | 8-Ø19,1 | 8-Ø19,1 | | 31,6 |
| DN125 | 5" | 215,9 | 210 | | 8-Ø22,2 | 8-Ø19,1 | | 42,2 |
| DN150 | 6" | 241,3 | 240 | | 8-Ø22,2 | 8-Ø23 | | 53,2 |
| DN200 | 8" | 298,5 | 295 | | 8-Ø22,2 | 12-Ø23 | 8-Ø23 | 91,3 |
| DN250 | 10" | 362 | 355 | 350 | 12-Ø25,4 | 12-Ø28 | 12-Ø23 | 134,6 |
| DN300 | 12" | 431,8 | 410 | 400 | 12-Ø25,4 | 12-Ø28 | 12-Ø23 | 200 |

Note : Size 5" is only UL listed

Valve flange drilling (size and location of holes) allows mating with the following flange types:

ANSI= ANSI B16.1 Class 125

PN16=DIN 2501, EN 1092 - PN16, BS 4504

PN10=DIN 2501, EN 1092 - PN10, BS 4504