



# 2-PC. FLANGED END BALL VALVE

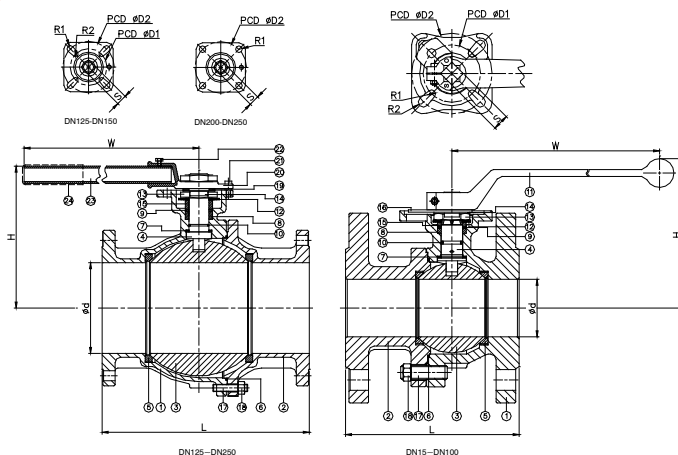
# 2019D

## FEATURES

- Full port, 1/2"-10" (DN15~DN250)
- W.P. : PN16/40
- W.T. : -20°C~200°C (-4°F~392°F)
- Investment casting
- Blow-out proof stem
- Live-loading design
- Anti-static device
- Locking device
- ISO 5211 direct mounting pad
- **API 607 Fire safe approved**
- **ISO 15848 fugitive emission approved (option)**
- **Automation accessories (option)**
- **Spring return handle (option)**
- Face to face : DIN 3202-PART1-F4/F5  
**DIN 3202-PART1-F1 (option)**



ITEM	PARTS	MATERIAL	
1	BODY	1.4408	1.0619
2	CAP		
3	SOLID BALL	ASTM A351-CF8M	
	HOLLOW BALL	ASTM A240-316	
4	STEM	ASTM A276-316	
5	SEAL	RTFE / TFM1600	
6	SEAL	GRAPHITE / 316+GRAPHITE	
7	THRUST WASHER	CTFE	
8	PACKING A	GRAPHITE	
9	PACKING B	CTFE	
10	O-RING	VITON	
11	HANDLE	AISI 304	
12	BELLEVILLE WASHER	AISI 301	
13	STEM NUT	AISI 304	
14	LOCK DEVICE		
15	GLAND RING		
16	LOCK WASHER		
17	BOLT		
18	NUT		
19	FLAT WASHER		
20	HANDLE HEAD		
21	STOP PIN		
22	BOLT		
23	STEEL TUBE	PVC	
24	HANDLE SLEEVE		



DN	d	L	H	W	S	D1	D2	R1	R2	ISO 5211
15	15	115	87	190	9	36	42	2.75	2.75	F03/F04
20	20	120	90.5	190	9	36	42	2.75	2.75	F03/F04
25	24	125	92.4	190	11	42	50	2.75	3.5	F04/F05
32	30	130	106.9	190	11	42	50	2.75	3.5	F04/F05
40	38	140	121.9	235	14	50	70	3.5	4.5	F05/F07
50	50	150	129.9	235	14	50	70	3.5	4.5	F05/F07
65	64	170	155.8	325	17	70	102	4.5	5.5	F07/F10
80	76	180	162.3	325	17	70	102	4.5	5.5	F07/F10
100	98	190	190.9	325	22	102	125	5.5	6.5	F10/F12
125	125	325	232	756	27	102	125	6.5	5.5	F10/F12
150	150	350	253	756	27	102	125	6.5	5.5	F10/F12
200	200	400	320.5	840	36	-	140	8.5	-	F14
250	250	450	355	1040	36	-	140	8.5	-	F14

NPS	d	L	H	W	S	D1	D2	R1	R2	ISO 5211
1/2"	0.59	4.53	3.43	7.48	0.35	1.42	1.65	0.11	0.11	F03/F04
3/4"	0.79	4.72	3.56	7.48	0.35	1.42	1.65	0.11	0.11	F03/F04
1"	0.94	4.92	3.64	7.48	0.43	1.65	1.97	0.11	0.14	F04/F05
1-1/4"	1.18	5.12	4.21	7.48	0.43	1.65	1.97	0.11	0.14	F04/F05
1-1/2"	1.5	5.51	4.8	9.25	0.55	1.97	2.76	0.14	0.18	F05/F07
2"	1.97	5.91	5.11	9.25	0.55	1.97	2.76	0.14	0.18	F05/F07
2-1/2"	2.52	6.69	6.13	12.8	0.67	2.76	4.02	0.18	0.22	F07/F10
3"	2.99	7.09	6.39	12.8	0.67	2.76	4.02	0.18	0.22	F07/F10
4"	3.86	7.48	7.52	12.8	0.87	4.02	4.92	0.22	0.26	F10/F12
5"	4.92	12.8	9.13	29.76	1.06	4.02	4.92	0.26	0.22	F10/F12
6"	5.91	13.78	9.96	29.76	1.06	4.02	4.92	0.26	0.22	F10/F12
8"	7.87	15.75	12.62	33.07	1.42	-	5.51	0.33	-	F14
10"	9.84	17.72	13.98	40.94	1.42	-	5.51	0.33	-	F14

unit:mm  
unit:in